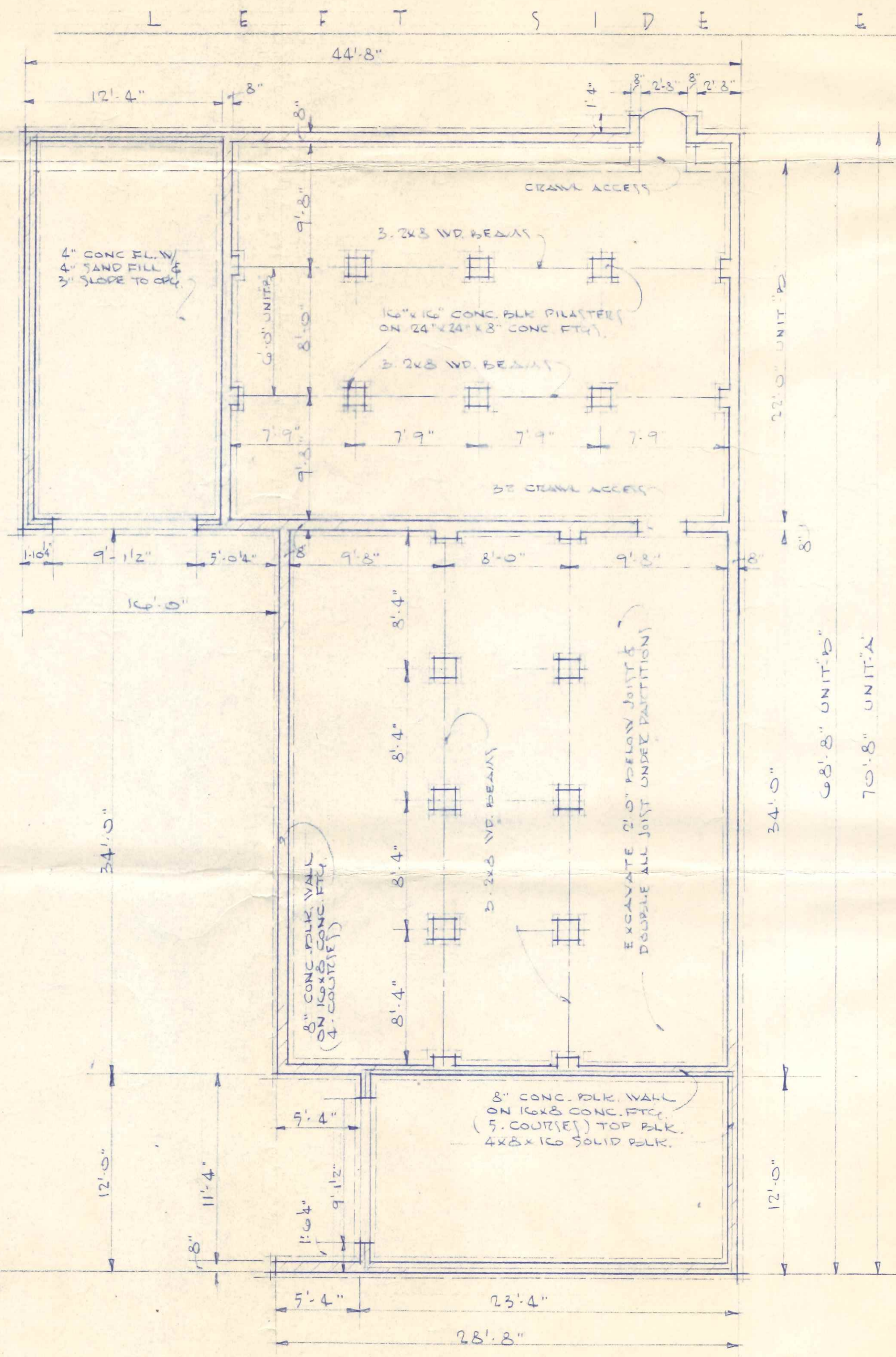
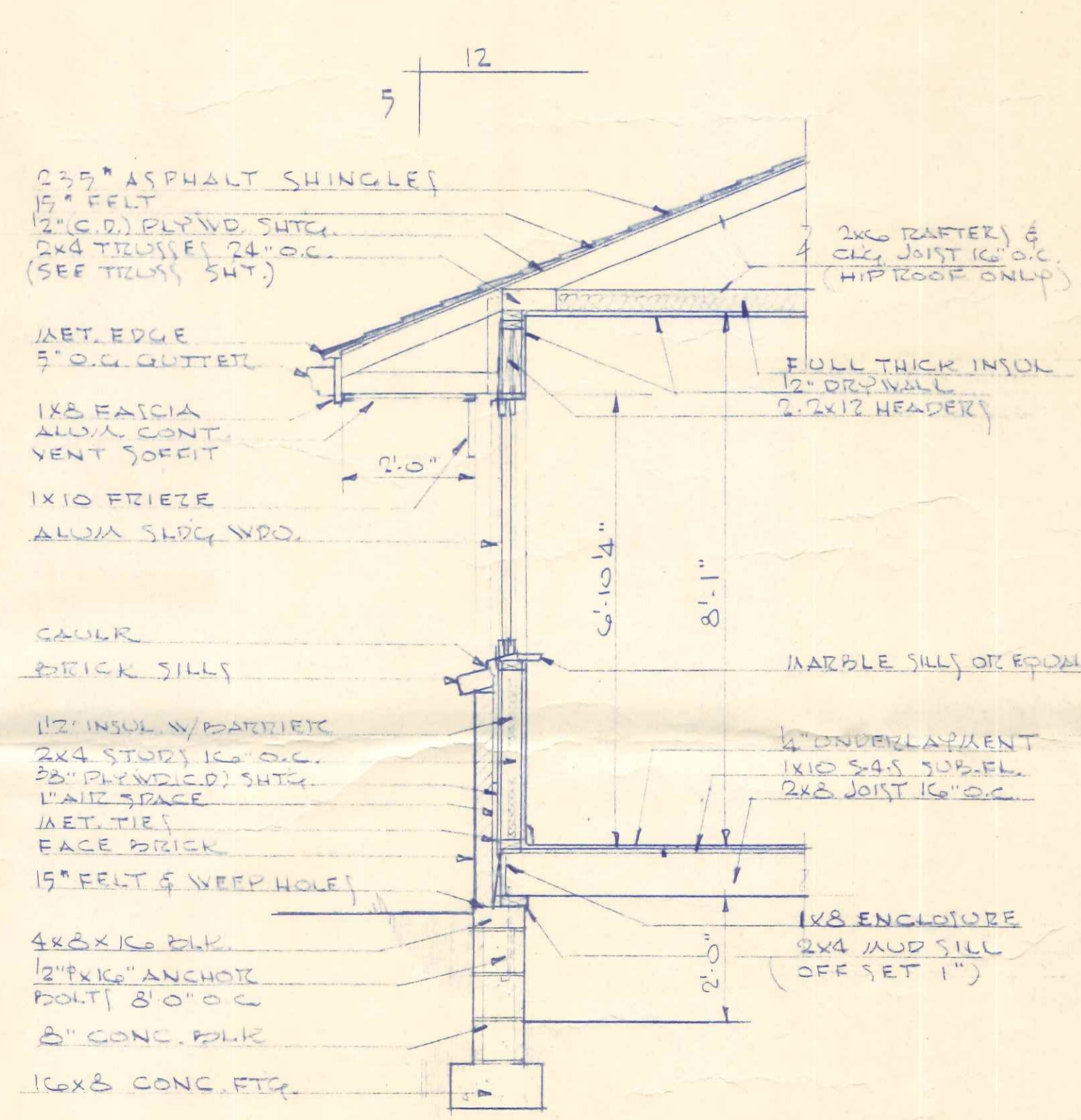
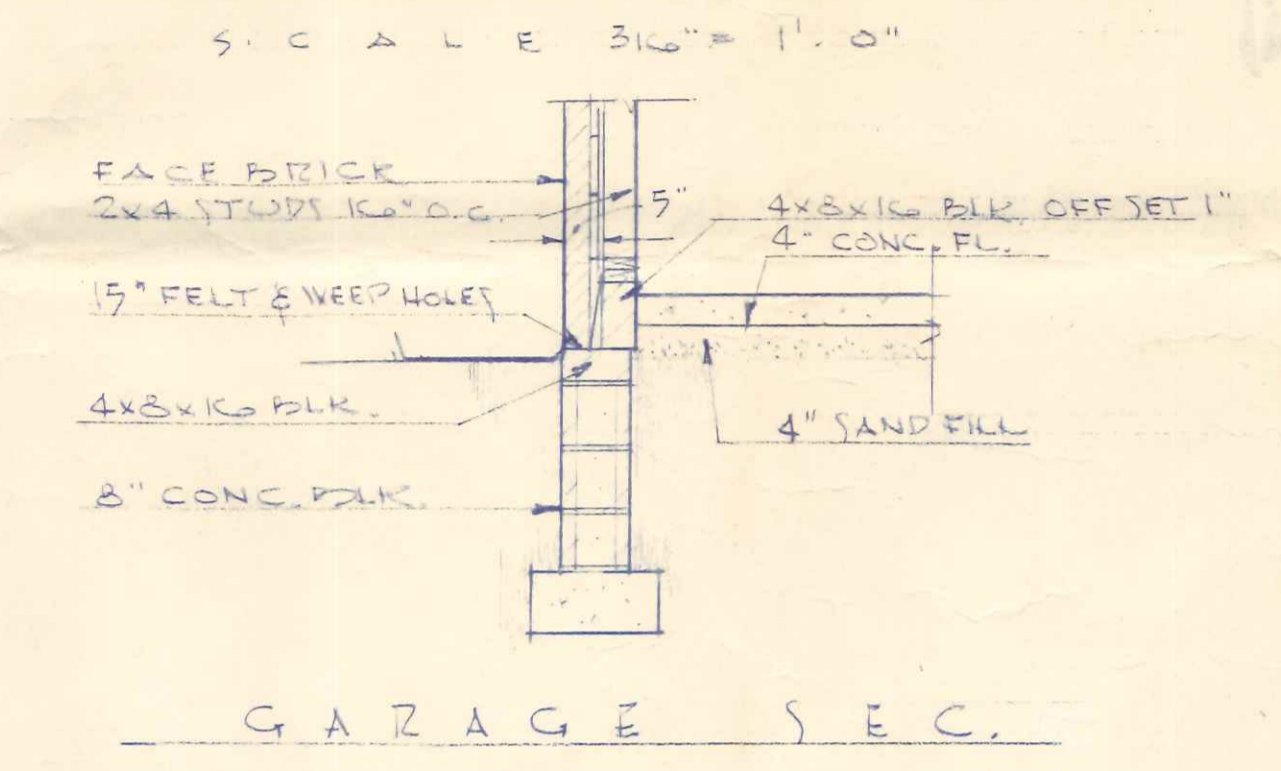


NOTE:  
ALL PARTITION DIMENSION  
3/8" UNLESS OTHERWISE  
NOTED.  
FOUNDATION DIMENSIONS  
SHALL BE 10" OVER FRAME

FLOOR PLAN UNIT "A"  
SCALE 3/8" = 1'-0"



FOUNDATION PLAN  
UNIT "A" & UNIT "B"



CROSS SECTION  
SCALE 1/2" = 1'-0"

UNIT - "A"	
2. BDRM.	776.99#
3. BDRM.	974.44
TOTAL	1751.43#

UNIT - "B"	
1. BDRM. GAR.	279.40#
2. BDRM. GAR.	304.00
3. BDRM. GAR.	277.43#
TOTAL	1087.11#

SHEET OF SHEETS	
DATE 1.31.08	SCALE AS NOTED
JOB # 2008	DRAWN BY P.E.H.
CHD. 034	

BLUE RIDGE HOMES, INC.  
T O L E D O